

INSIDER'S LOOK AT
TERRAVITA 78

SHOP LOCAL FOR
FALL FASHION 34

A HOME BUILT
FOR ENTERTAINING 92

CHAPEL HILL

FALL
ARTS
PREVIEW
Page 38

SEPTEMBER/OCTOBER 2016
CHAPELHILLMAGAZINE.COM

Our 7th Annual **FOODIE** **ISSUE**

THE FIRST LADY & THE COOK
Mena Choi and her mom, Tracy DeLozier,
met first lady Michelle Obama
this summer after the 10-year-old
won a statewide recipe contest.

A (YOUNG) COOK'S TRIP TO THE WHITE HOUSE
AN INCREDIBLE EDIBLE ROMAN HOLIDAY
CHEFS AT HOME - AND THEIR RECIPES!
STAYCATION: TOURING TOPO DISTILLERY

The HOSPITABLE HOME

THE WOODFINS BUILT THEIR NEW HOME FOR THEMSELVES AND THEIR GUESTS

BY JESSIE AMMONS
PHOTOGRAPHY BY BRIANA BROUGH

WALK INTO THE WOODFIN

household and you are apt to be greeted with drinks and hors d'oeuvres, no matter the time of day. "Would you like water - sparkling or still? Or I can make a cocktail, or open a bottle of wine. And I have cheese, or I can fix a snack!" offers **Terry Woodfin**.

Terry and husband **Chris Woodfin** recently entered their long-planned downsizing phase after their kids - **Chase, 27, and Chelsea, 24** -

Terry, Chris and daughter
Chelsea, with dogs Bentley
and Charlie Sue.



The pantry is Pinterest-worthy with a backlit shelf beckoning you to snacks in glass jars. Besides being pretty, it's practical for entertaining. "I can see everything out in front of me, and I know when my supply is low of anything," Terry says.

graduated from **East Chapel Hill High** and left the nest for college and careers a few years ago. The couple, who raised their family in a home off **Weaver Dairy Road**, made the decision to build a Craftsman house on a wooded lot five miles south of downtown Chapel Hill, and they designed and built it with an eye to hosting family and friends.

The Woodfins purchased their homesite in June 2015 and moved in a year later. "I had always wanted to buy a piece of property and build," Chris, an EVP/CFO at Community Care of NC, says. "And once I make a decision, I like to go ahead and get it done." His zeal is complemented by Terry's organization - something that comes naturally for the interior designer. "Moving can be very disruptive," she says, "but it should not stop your life."

The decision came after much deliberation and planning. Once Chase and Chelsea were both out of the house, Terry and Chris began discussing a downsize. At first, the children were slightly unsettled at

the prospect. But during Chelsea's senior year at **UNC**, she returned to their former house and said, as Chris recalls, "You know, this house is where we grew up, but it's just a house. Our home is where you guys are."

Chelsea's sentiment became the guiding principle for her parents' plans for the new build, one dreamed up during two years living in a rental house. The new house, tucked away a few miles southeast of **Southern Village**, is based on an exterior design by an Atlanta-based architect. From there, the Woodfins designed their own floorplan.

HEART OF THE HOME

"This was a downsize for us, even though we don't feel like we lost much space," Chris says. Rather than five bedrooms, they now have three; and instead of a formal dining and living space, they have a conjoined kitchen, den and breakfast nook punctuated by a soaring

Live Bold, Live Well GALLOWAY RIDGE WELLPLEX

Enjoy the best in fitness and health care. Our state-of-the-art Wellplex facilities are open to everyone.



GALLOWAY RIDGE
AT FEARRINGTON



Duke Primary Care

Duke Primary Care of Galloway Ridge is an internal medicine clinic for seniors with a focus on seniors.

M-F: 8:20 am-5:00 pm
50 Craggenmore Close, Pittsboro



Center for Physical Therapy GALLOWAY RIDGE

Physical therapy, speech and occupational therapy treatment of a variety of conditions.

M-F: 8:00 am-5:30 pm
50 Craggenmore Close, Pittsboro



Duke Center for Health and Fitness at Fearrington

Full-service, medically-based fitness center.

M-Th: 6:00 am-8:00 pm
Sa: 8:00 am-4:00 pm; Su: 10:00 am-4:00 pm

100 Clynelish Close, Pittsboro
919.545.2133 • DukeFit



LEFT The floor-to-ceiling cabinets in the kitchen give the Woodfins plenty of storage – not that they need it with a dream pantry a few feet away.

RIGHT The master bath is on the first floor so they can age in place. “We think this is where we’ll stay,” Terry says of the house. Chris agrees: “We’ll retire here.”



shiplapped cathedral ceiling and French doors that open to a roomy screened porch. “We still have all of the utility because of this open concept,” Terry explains.

Utility also comes from sheer space. The kitchen – accented with white beveled subway tile and dark leathered rough-edge granite countertops – features an island with seven barstools: five leather seats and two end stools. “We like to joke that one day we can have five grandkids sitting here,” Chris says, gesturing at the five leather seats, “and we’ll sit on the end and be able to look at all of them.”

Joking aside, the space is indeed arranged to promote conviviality. “In lieu of the formal dining room, we have this farm table,” Terry says. The farm table is a standout part of the kitchen, an example of both Chelsea’s family-oriented sense of home and Chris and Terry’s entertaining bent. “Chelsea salvaged the wood from a barn,” Terry explains. The barn was being torn down in Whispering Pines, North Carolina. “I found an artisan on Etsy based in Fuquay-Varina, and we had this custom-made.” It can seat 10, plenty of folks for a healthy dinner party, and also maintains the unique character of its salvaged history. “You can see where there were holes in the wood,” Terry points out. “Chelsea says she can still recall hearing the carpenter bees on the day they got the wood.” ▶

We know **Orange, Durham, & Chatham** County

60+ YEARS OF EXPERTISE TO HELP YOUR BUSINESS GROW

- Builder Finance
- Commercial Real Estate
- Non-Profit Finance
- Owner-Occupied Professional
- Small Business & SBA Financing
- Real Estate Acquisition and Development
- Construction Loans

Fidelity Bank
Right By You.®

101 Europa Dr., Ste. 130 • Chapel Hill
(919) 314 - 2030
www.fidelitybanknc.com

Loans subject to credit approval

30 YEARS EXPERIENCE
QUALITY BUILDER | SERVICE ORIENTED

currently under construction
1101 Roost
in the heart of
Spring 2016
Custom Spec

Thomas B. Custom Homes
919 868 3344 | bvoelkel@thomasb.com



The porch is Terry's favorite place in the house. With fireplace, TV and bar, it's a cozy spot for entertaining — or to enjoy alone. "I like to go out there and catch the evening news and have a glass of wine," she says.

NOT JUST ANOTHER NEIGHBORHOOD

The Woodlands offers large, estate-sized lots to build the home of your dreams in the Chapel Hill School district. Six minutes to a Tar Heel game, twenty-five to the airport, yet a peaceful world apart.



THE RIGHT FIT

Like the wood Chelsea salvaged for the farm table, the entire Woodfin home is a balanced representation of the whole family. Chris and Terry built the home to be simultaneously rustic and fresh, a place where friends and family are always welcome. And they are. "Two nights after we moved in, we sat at the farm table with friends who brought us takeout for dinner," Terry says. "That's how we want this phase to go." For Chris's birthday over Memorial Day weekend, Chase and Chelsea, who works nearby at **Strata Solar**, returned home for a family staycation of sorts. "We ate on every surface," Terry says. "We ate on the porch, at the table, at the bar. We broke it in."



Come join us as we celebrate our new
saltwater filtration system
in our heated indoor pool

WE ALSO FEATURE: Suspended Cushioned Track • Group Exercise Classes • Weight Loss Programs • Balance Programs • Barre • Pilates Reformer Training • Nutritional Counseling • Therapeutic Massage

1/2 OFF ENROLLMENT
TO THE FIRST 50 RESPONDENTS BY OCTOBER 15, 2016



**Duke Center for Living
HEALTH AND FITNESS CENTER
at Farrington**

IN PARTNERSHIP WITH GALLOWAY RIDGE RETIREMENT COMMUNITY

Open: Mon–Thur: 6 am–8 pm, Fri: 6 am–7 pm, Sat: 8 am–4 pm, Sun: 1–5 pm
100 Clynesh Close, Pittsboro | 919.545.2133 | www.DukeFitnessFarrington.com



Atop the Woodbridge Furniture chest is a gothic arched window frame, an antique piece collected by the family over 19 years ago.



O'Mar
Landscaping & Lawn Care

Voted Best Landscaper by the Readers of C



Our flexible services range from basic lawn maintenance to full service grounds care allowing you to customize your program to fit your needs. We also offer full landscape design and installation.

919.942.5061 | omaralandscaping.com



Chris has a vintage Coca-Cola vending machine in his office. "That's been in my family since the 1950s. It's always a good conversation starter." He keeps coins in an old metal tin atop the vending machine so guests can fetch a drink when they visit.

GATHER ROUND

Before the custom-built farm table that now defines the kitchen's eating nook, the Woodfins had another dining table. That one, smaller and circular, was made by a family friend 32 years ago. Chelsea and Chris shared family meals at the table for their entire lives, so when it came time to move, nobody could imagine giving it away. Instead, it now takes up a corner of the screened porch. When the kids are home, the Woodfins still dine alfresco around the familiar communal spot, and now, it's great for hosting friends for a casual meal, too.

FIND YOUR DREAM HOME



"Using Chris Knapp as our real estate agent was a fantastic experience. She has an amazing attention to detail and will definitely go the extra mile for her clients."

Alex Raab & Kym Gowdy

Chris Knapp

Your Luxury Home Specialist

www.WelcomeHome919.com
chris@welcomehome919.com
(919) 307-9750



HOWARD PERRY
AND WALSTON



HORIZON
CUSTOM BUILDERS

BUILDING TOMORROW TODAY



Two Gold Winners in the 2015 Parade of Homes. See photos on

HorizonCustomBuilders.com
(919) 291-5024
info@HorizonCustomBuilders.com

Visit
to see pa
and
of ou
of H

“

It immediately felt like home," Terry says.
"We're very happy. This is our retreat."

”

The We in Weaver Street Realty

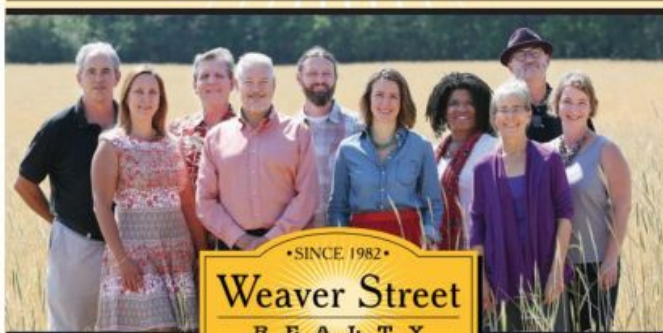
We
We
We
We

relish the local fare, from food trucks to 5 stars.

can point you to local brews, from beans to hops.

believe food and land are best close to hand.

know this community, from grits to granola.



• SINCE 1982 •
Weaver Street
REALTY

(919) 929-5658 • 116 E Main St. • Downtown Carrboro

WeaverStreetRealty.com



IT TAKES A VILLAGE

Thanks to her industry experience, Terry knew exactly who to call to make their design-build perfect. "All of our contractors, everybody, was amazing," she says. Here's the roundup.

New Vista Development in Chapel Hill built the home.

Klassic Electric Services in Chapel Hill helped install specialty lighting.

Carolina Closets Plus in Chapel Hill are to thank for all of the closets — including his and hers walk-ins in the master suite — Terry's office and the walk-through pantry shelving and its lighting.

Although the Woodfins didn't buy a lot of new furniture, much of what they did purchase came from **Carolina Classic Furniture** in Granite Falls, N.C.

Flipping Fuquay made the kitchen farm table.

Cabinet Creations in Moncure, N.C., helped with rustic details, including the den's wooden mantel.

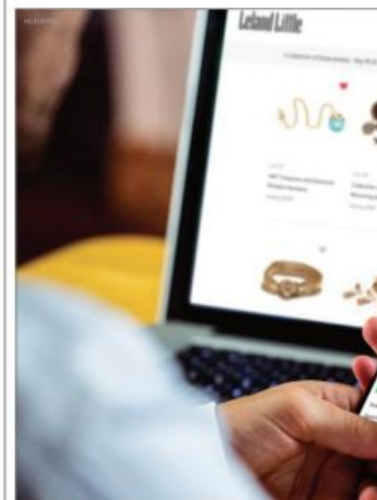
It's usually recommended to paint their particular style of Craftsman home at least three different colors, including accent trim. "I couldn't do it," Terry says of choosing the colors. She elected to go classic. "I just went all one color: white. Even the trim."

Not that the home needed breaking in. You'd never guess the couple have lived there for just a few months, and that's by Terry's professional design. "We said, 'let's not allow this move stop our life,'" she says. "She has a system," Chris says with a chuckle, "and it works. We didn't want to be those people who move in and six months later are still living out of boxes."

With windows overlooking forest views and the open concept of the house, the settled feel is also simply genuine. "It immediately felt like home," Terry says. "We're very happy. This is our retreat." **CHM**



919.644.2836
hillsboroughhaven.com



Leland Little
AUCTIONS

Find
With thousand
each month, yo
Hillsborough, N